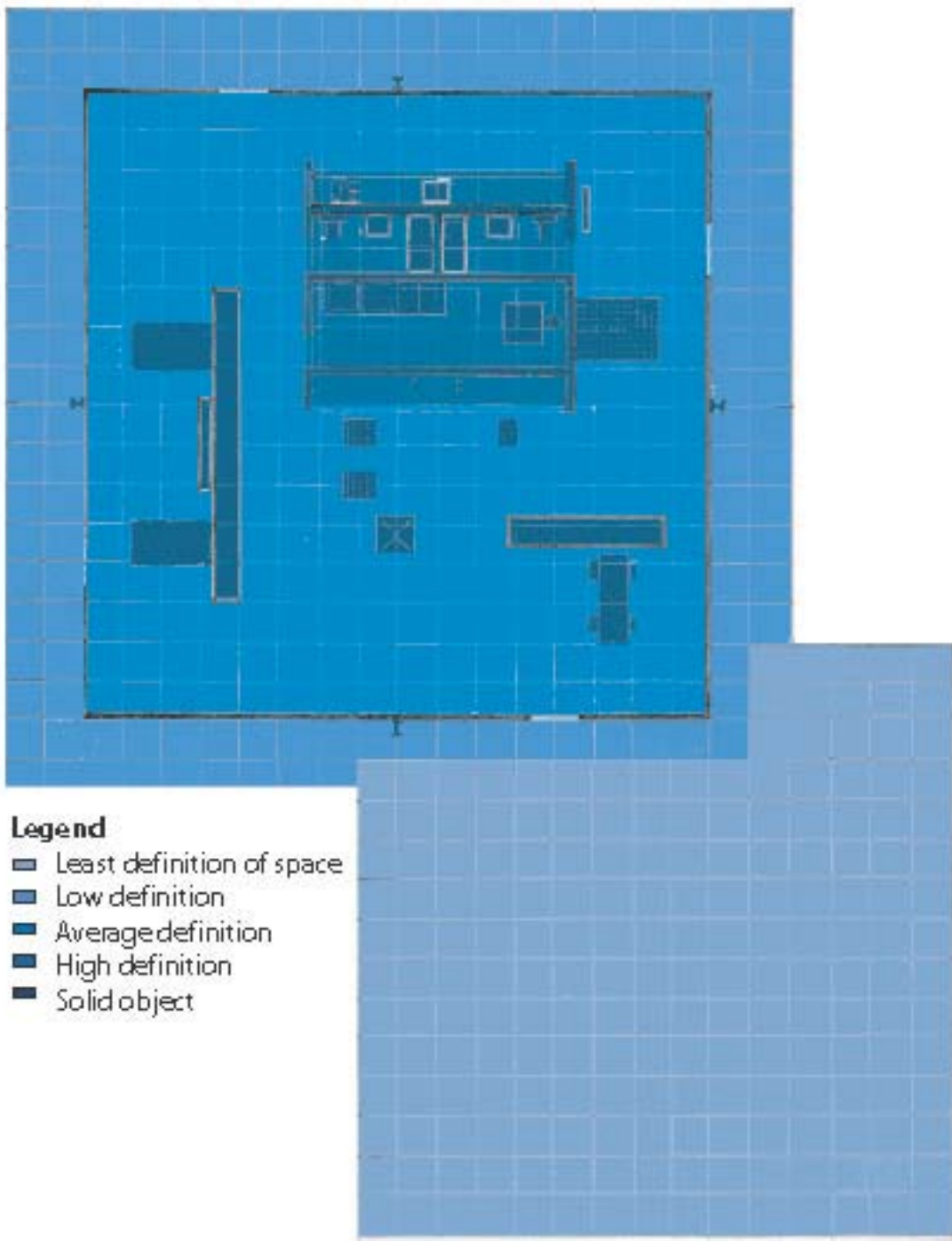
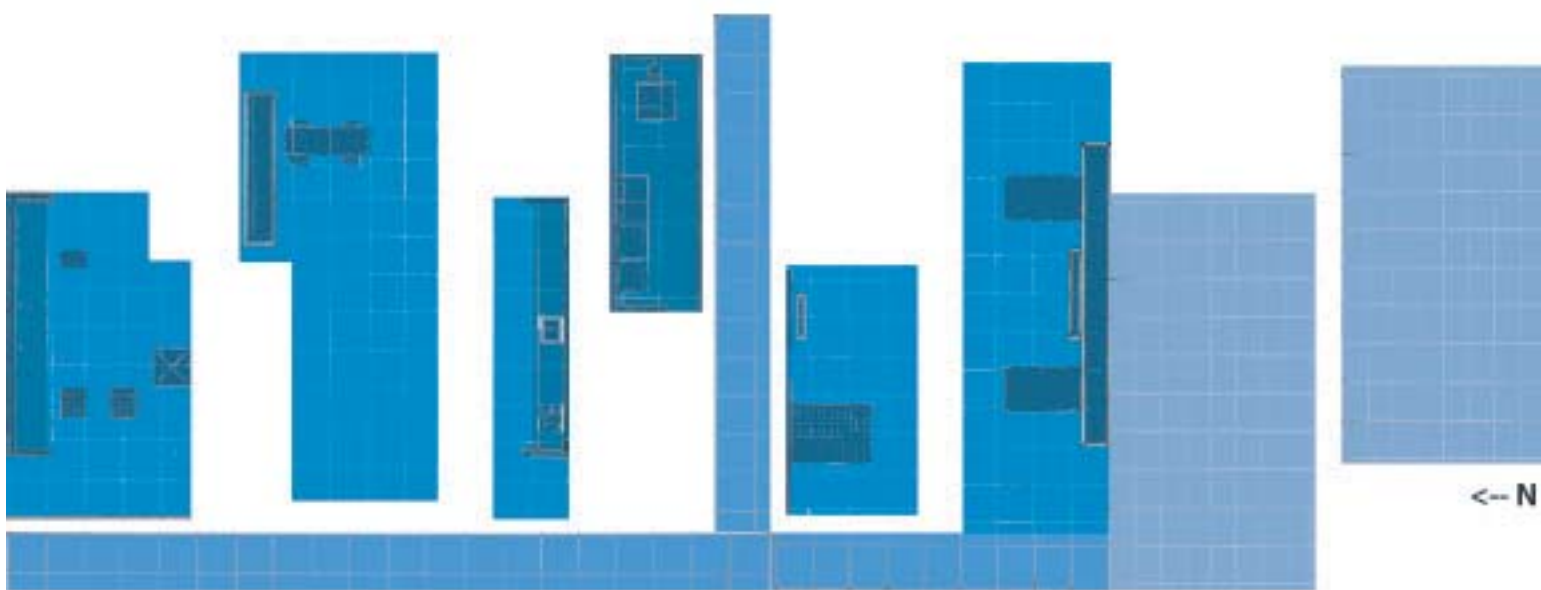


The 'Spatial Purity' of Mies



- Legend**
- Least definition of space
 - Low definition
 - Average definition
 - High definition
 - Solid object

Reorganization and Recontextualization



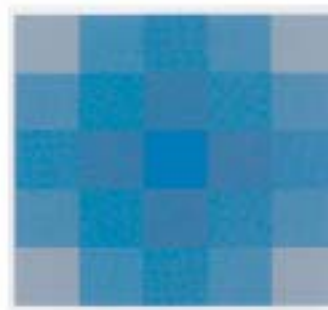
In the previous diagram, spatial elements were placed into conceptual 'pairs'. We rearrange each couple to fit into our new site, while preserving their original 'pinwheel' geometry.

Choice of Color



"Blue is contracted, introverted. As red is associated with blood, so is blue with the nervous system. Blue is a powder like that of nature in winter; when all germination and growth is hidden in darkness and silence. Blue is always shadowy, and tends in its greatest glory to darkness."
--Johannes Itten, *The Art of Color*

Choice of Technique



"Saturation, or quality, relates to the degree of purity of a color. Contrast of saturation is the contrast between pure, intense colors and dull, diluted colors."
--Johannes Itten, *The Art of Color* (diagram, quote)

In the context of eyeshadow, saturation is used to define contour and space.

Contrast of Saturation, Opacity --> Impurity

